
KardiaMobile



AliveCor®

- www.kardiamobile.co.uk

KardiaMobile

- The most clinically validated medical grade personal
- The only CE marked and FDA Cleared 6 Lead personal ECG
- > 80 peer reviewed publications <https://www.alivecor.com/research>
- Diagnostic quality ECG on a compatible smartphone or tablet <https://alivecor.zendesk.com/hc/en-us#compatibility>
- Takes just 30 seconds
- Captures events immediately
- Instant analysis

How to record an ECG

COST (£) OF CURRENT PATHWAY†

First GP visit (incl. ECG test)	£81
Outpatients	£230
24hr ECG	£163
7 day Holter test	£163
Outpatients and decision	£230
7 day Holter test	£163
Outpatient and decision	£230
Implantable loop recorder (ILR)	£4,021-£4,556
Second GP visit	£45

Total (with ILR) £1,305 (£5,861)

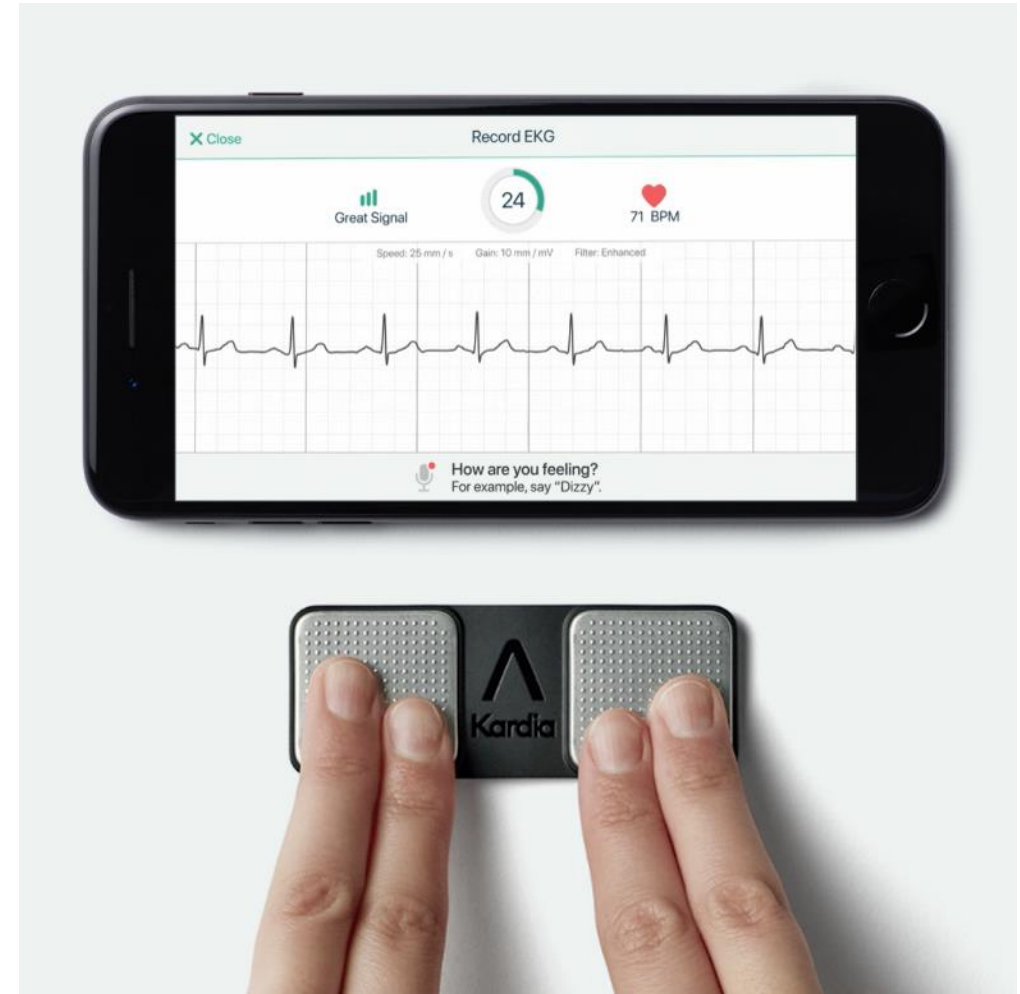
COST (£) WHEN USING KardiaMobile

First GP visit (incl. ECG test)	£45
GP supplies KardiaMobile	£99
Second GP visit	£45

Total £189

† UCLPartners, AliveCor Economic Case, 2016

VS



Technical Specs - KM

Dimensions

- 8.2 cm x 3.2 cm x 0.35 cm
- Two 3 cm x 3 cm stainless steel electrodes

Weight

- 18 grams

Power

- 3V CR2016 coin cell battery (included)
- 12 months typical use

Connectivity

- Frequency Modulated Ultrasonic Audio Tone (19 kHz)

ECG Characteristics

- Single Lead ECG
- 10 mV peak-to-peak input dynamic range
- 30 second to 5 minute recording duration
- 300 samples per second sampling rate
- 16 bit resolution

Requirements

- Compatible Apple or Android device
- Kardia App



KardiaMobile 6L



AliveCor®

How to record an ECG



PDF Report

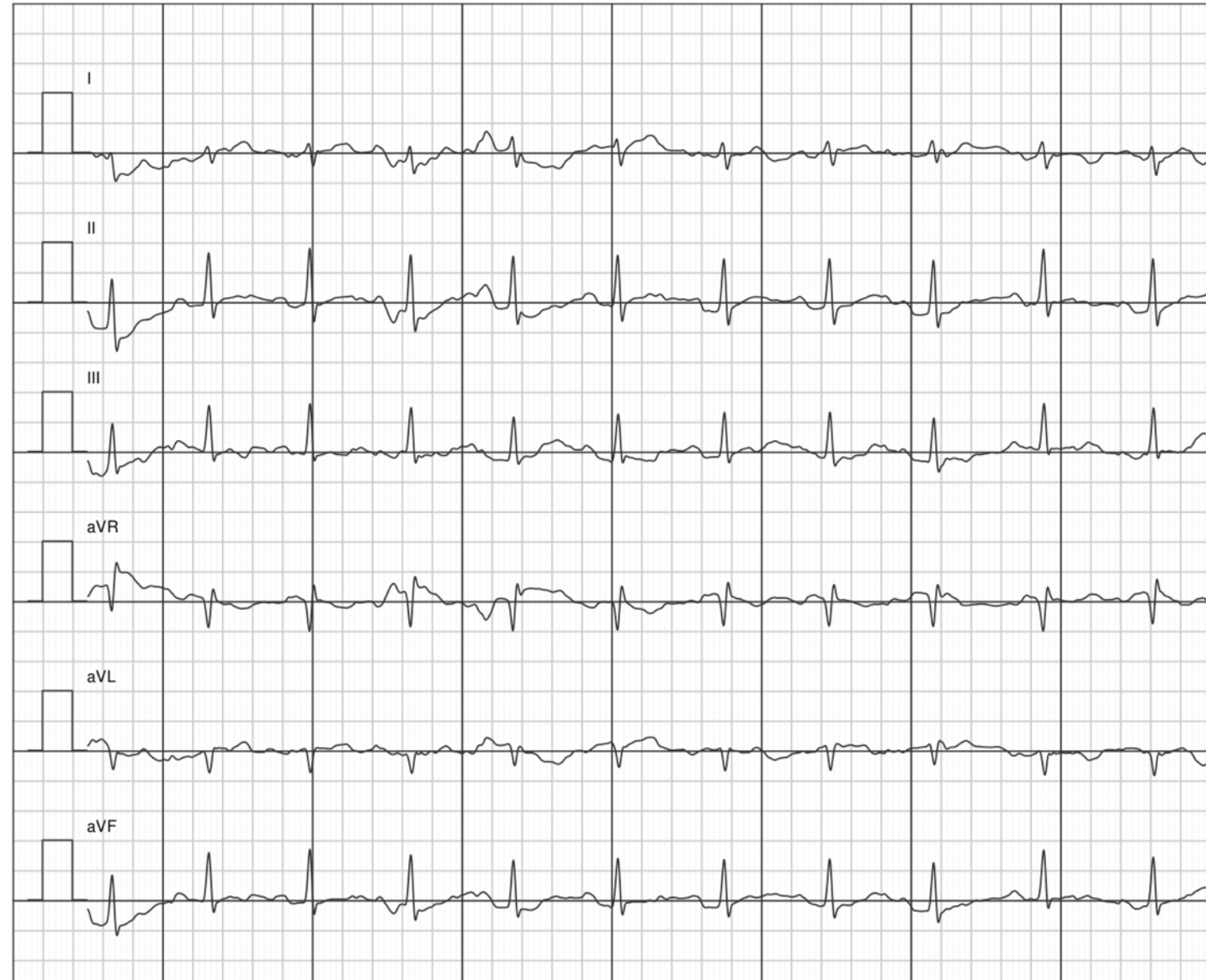
Patient: [REDACTED]
Recorded: Tuesday, July 23, 2019 8:07:45 PM
Heart Rate: 82 bpm Duration: 30s

Instant Analysis: Normal



Instant Analysis is done on Lead I.

Mains filter: 50Hz Scale: 25mm/s, 10mm/mV



Technical Specs – KM6L

Dimensions

- 9.0 cm x 3.0 cm x 0.72 cm
- Three 3 cm x 3 cm stainless steel electrodes

Weight

- 24 grams

Power

- 3V CR2016 coin cell battery (included)
- 12 months typical use

Connectivity

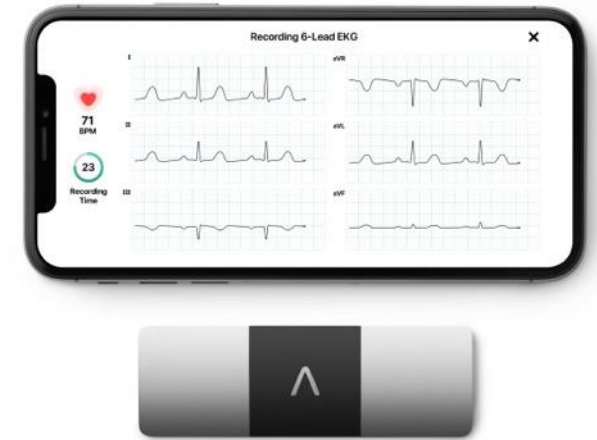
- **Bluetooth Low Energy technology**
- 1m wireless range

ECG Characteristics

- Six Lead ECG
- 10 mV peak-to-peak input dynamic range
- 30 second to 5 minute recording duration
- 300 samples per second sampling rate
- 14 bit resolution

Requirements

- Compatible Apple or Android device
- Kardia App



KardiaPro



AliveCor®

KardiaPro Overview

- KardiaPro is the only remote Patient Monitoring Platform that connects with AliveCor's personal ECG devices.
- Patients record their ECG anytime, anywhere in just 30 seconds. Through KardiaPro, their recordings are accessible immediately to physicians for further analysis and therapy decisions.
- Physicians can access relevant cardiac health-data whenever needed via the web-based portal.



AliveCor hardware & software offer

- Hardware pricing

KM6L	List price incl. VAT (£)	Units requested	Total no. units supplied	Final cost per unit incl. VAT (£)	Discounted price for total units supplied (£)	Normal price for total units supplied (£)
Free units (one for every ten ordered)	149.00	10	11	135.45	1490.00	1,639.00
	149.00	20	22	135.45	2980.00	3,278.00
	149.00	50	55	135.45	7450.00	8,195.00
	149.00	100	110	135.45	14900.00	16,390.00
	149.00	200	220	135.45	29800.00	32,780.00
	149.00	300	330	135.45	44700.00	49,170.00

KM Single lead	List price incl. VAT (£)	Units requested	Total no. units supplied	Final cost per unit incl. VAT (£)	Discounted price for total units supplied (£)	Normal price for total units supplied (£)
Free units (one for every ten ordered)	99.00	10	11	90.00	990.00	1,089.00
	99.00	20	22	90.00	1,980.00	2,178.00
	99.00	50	55	90.00	4,950.00	5,445.00
	99.00	100	110	90.00	9,900.00	10,890.00
	99.00	200	220	90.00	19,800.00	21,780.00
	99.00	300	330	90.00	29,700.00	32,670.00

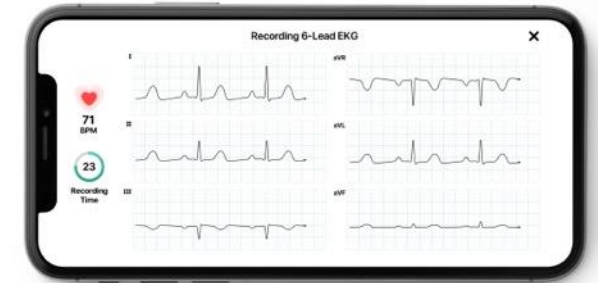
- KardiaPro Software

Six months free of charge trial for any institution or department



COVID-19 & KardiaMobile Support

- In line with our mission and the current situation, the highest priority is the safety and protection of healthcare professionals and patients during these uncertain times. KardiaMobile technology allows a clinically validated medical grade Single Lead and Six lead ECG in 30 seconds available in the convenience of a users own home. The ECG can then be shared directly with a health care professional remotely without a patient needing to attend a clinic or a face to face consultation.
- We understand many cardiology clinics are cancelled and ECG access for patients relying on them is difficult or impossible in UK&I. We hope to support patients who require an ECG of this level but cannot get access to a clinic with KardiaMobile
- Many existing patients require ECG currently, including but not limited - AF patients who need monitoring, Post AF Ablation patients and Arrhythmia ECG patients where clinics have been cancelled or out patient facilities are unavailable



COVID-19 & QTc

- Prolonged QT can lead to drug-induced sudden cardiac death (DI-SCD), and is a side effect of certain medications being used experimentally in the treatment of COVID-19, including Hydroxychloroquine and Azithromycin. KardiaMobile 6L is the only, 6-lead personal ECG device in the world. The device can record and display Lead II, which is one of the standards to measure QT and to calculate QTc. As a personal ECG it can help to save increased exposure of healthcare professionals to COVID-19 patients and the need for more personal protective equipment.
- Mayo Clinic issued an emergency guidance and developed their clinical workflow utilising KardiaMobile6L technology to record ECGs in order to evaluate drug-induced arrhythmias and to modify treatment accordingly.
https://mayoclinicproceedings.org/pb/assets/raw/Health%20Advance/jmcp/jmcp_covid19.pdf
- Our mission at AliveCor is to provide accessible cardiological care to those who need it most and we're proud to play a part in the well-being of those fighting the coronavirus

